

I.622 N | Tapered handles

Technopolymer, plain hole



MATERIAL

High-resilience polyamide based (PA) technopolymer.

STANDARD EXECUTIONS

Plain blind hole.

- **I.622-N:** black or red, glossy finish.
- **I.622-N-CLEAN:** white similar to RAL 9002, glossy finish.

The elastic coupling, by press-fit assembly on h9 tolerance drawn stock bars, is not affected by vibrations and prevents the handle from slipping off (see Technical data on page A-13).

FEATURES AND APPLICATIONS

This handle, thanks to its white colour and glossy finish, is particularly suitable for applications on medical and hospital equipment and on food processing machines whose parts, for hygienic reasons, must be frequently cleaned.

Its solid shape without cavities prevents unhealthy residues from depositing.

SPECIAL EXECUTIONS ON REQUEST

Different RAL colours.

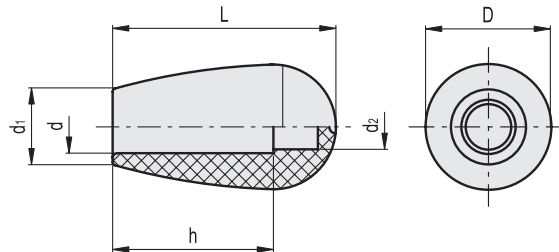
ASSEMBLY INSTRUCTIONS

Fit the handle onto slight chamfered shaft end and push as far as possible by hand or by means of a small press. Alternatively it is possible to tap the handle with a plastic or wooden mallet until firmly in place. In this case we strongly recommend to use a cloth or other suitable soft material over the product to avoid any surface damage.



ELESA Original design

Conversion Table	
1 mm = 0.039 inch	
L	
mm	inch
25	0.98
32	1.26
42	1.65
54.5	2.14



C9 RAL9005
 C6 RAL3000

I.622 N

METRIC

Code	Description	D	L	d	d2	d1	h	⚖
120941	I.622/25 N-6-C9	16	25	6	4	12	17	4
120946	I.622/25 N-6-C6	16	25	6	4	12	17	4
120971	I.622/30 N-8-C9	20	32	8	6	14	21	7
120976	I.622/30 N-8-C6	20	32	8	6	14	21	7
121021	I.622/40 N-8-C9	26	42	8	6	17	25	16
121026	I.622/40 N-8-C6	26	42	8	6	17	25	16
121031	I.622/40 N-10-C9	26	42	10	7.5	17	30	14
121036	I.622/40 N-10-C6	26	42	10	7.5	17	30	14
121091	I.622/55 N-10-C9	34	54.5	10	5.5	21	40	38
121096	I.622/55 N-10-C6	34	54.5	10	5.5	21	40	38
121101	I.622/55 N-12-C9	34	54.5	12	5.5	21	40	36
121106	I.622/55 N-12-C6	34	54.5	12	5.5	21	40	36

I.622-N-CLEAN

METRIC

Code	Description	D	L	d	d2	d1	h	⚖
151202	I.622/25 N-6 CLEAN	16	25	6	4	12	17	4
151212	I.622/30 N-8 CLEAN	20	32	8	6	14	21	7
151222	I.622/40 N-10 CLEAN	26	42	10	7.5	17	30	14
151232	I.622/55 N-10 CLEAN	34	54.5	10	5.5	21	40	38
151242	I.622/55 N-12 CLEAN	34	54.5	12	5.5	21	40	36



Fixed & Revolving handles